



hosa future
health
professionals

THE SECRET?

STEP 1 >

Understand CE!

STEP 2 >

Pick your Event!

STEP 3 >

Prepare!

STEP 1 >

LEVELS OF COMPETITION

- ▲ State Qualification Testing (SQT)
 - ▲ Some events have testing to qualify for State Leadership Conference
 - ▲ Top qualifiers in each region qualify for SLC
 - ▲ Check the Quick Reference Guide for more info
 - ▲ <https://www.georgiahosa.org/competitive-events>



STEP 1 >

LEVELS OF COMPETITION

- ▲ State Leadership Conference (SLC)
 - ▲ May only qualify for participation in ONE competitive event
 - ▲ Registration, Feb 4th and event materials due no later than Feb 18th
 - ▲ [List of Events and Activities- 2021/2022](#)
 - ▲ Qualifies you for ILC- Top 3 in each Event



STEP 1 >

CATEGORIES OF COMPETITION

Middle School Events

Middle School (MS)- A middle school student is one who: a) is enrolled in a state-approved health science program or is planning to pursue a career in the health professions; and b) has not been promoted to a secondary institution (grades 9-12) prior to the state's/country's annual conference. He/she must be in grades 6-8.

Barbara James Service Award Recognition	Dynamic Decisions Teamwork	Exploring Medical Innovation Teamwork	Extemporaneous Health Poster Leadership	Foundations of Medical Terminology Health Science
Health Career Exploration Health Science	Health Career Display-MS Teamwork	Health Career Preparation Leadership	Health Education Teamwork	Healthy Lifestyle Leadership
HOSA Happenings Recognition	HOSA Service Project Recognition	Life Threatening Situations Emergency	Math For Health Careers Health Science	Foundations of Medical Reading Health Science
Foundations of Nutrition Health Science	Prepared Speaking Leadership	Public Health Emergency	Speaking Skills* Leadership IDEA qualified event	

STEP 1 >

CATEGORIES OF COMPETITION CONT'D

▲ Health Science Events

- ▲ Individual competitions focused on general knowledge
- ▲ Mostly knowledge tests (Medical Spelling has Round 2 Spelling Bee)

Health Science Events

Behavioral Health	Cultural Diversities & Disparities	Dental Terminology	Health Informatics	Human Growth & Development
Medical Law & Ethics	Medical Math	Medical Reading	Medical Spelling	Medical Terminology
Nutrition	Pathophysiology	Pharmacology		

STEP 1 >

CATEGORIES OF COMPETITION CONT'D

▲ Health Professions Events

- ▲ Individual competitions focused on specific professions
- ▲ Mostly Two Rounds (except Clinical Specialty & Personal Care)

Health Professions Events

Biomedical Laboratory Science	Clinical Nursing	Clinical Specialty	Dental Science	Family Medicine Physician
Home Health Aide	Medical Assisting	Nursing Assisting	Personal Care* <small>IDEA qualified event</small>	Pharmacy Science
Physical Therapy	Sports Medicine	Veterinary Science		

STEP 1 >

CATEGORIES OF COMPETITION CONT'D

▲ Emergency Preparedness Events

- ▲ Most events require teammates (except Life Support Skills & Epidemiology)
- ▲ Require critical thinking skills

Emergency Preparedness Events



STEP 1 >

CATEGORIES OF COMPETITION CONT'D

▲ Leadership Events

- ▲ Individual competitions focused on employability & leadership skills

Leadership Events

Extemporaneous Writing

Health Career Photography

Healthy Lifestyle

Interviewing Skills*

IDEA qualified event

Job Seeking Skills

Organizational Leadership

Prepared Speaking

Researched Persuasive Writing & Speaking

Research Poster

Speaking Skills*

IDEA qualified event

STEP 1 >

CATEGORIES OF COMPETITION CONT'D

▲ Teamwork Events

- ▲ Events require teammates
- ▲ Focused on working together to solve problems & share knowledge

Teamwork Events

Biomedical Debate	Community Awareness	Creative Problem Solving	Forensic Science	Health Career Display
Health Education	HOSA Bowl	Medical Innovation	Parliamentary Procedure	Public Service Announcement

STEP 1 >

OTHER CATEGORIES

▲ Recognition Events

- ▲ May participate in multiple events within this category, per guidelines

hosa

STEP 2 >

Selecting an Event

www.hosa.org

hosa



About ▾

MyHOSA ▾

Partners ▾

Competition ▾

Conferences ▾

Resources ▾

SEARCH HOSA



General Rules and Regulations

Guidelines

Competitive Event Useful Tools

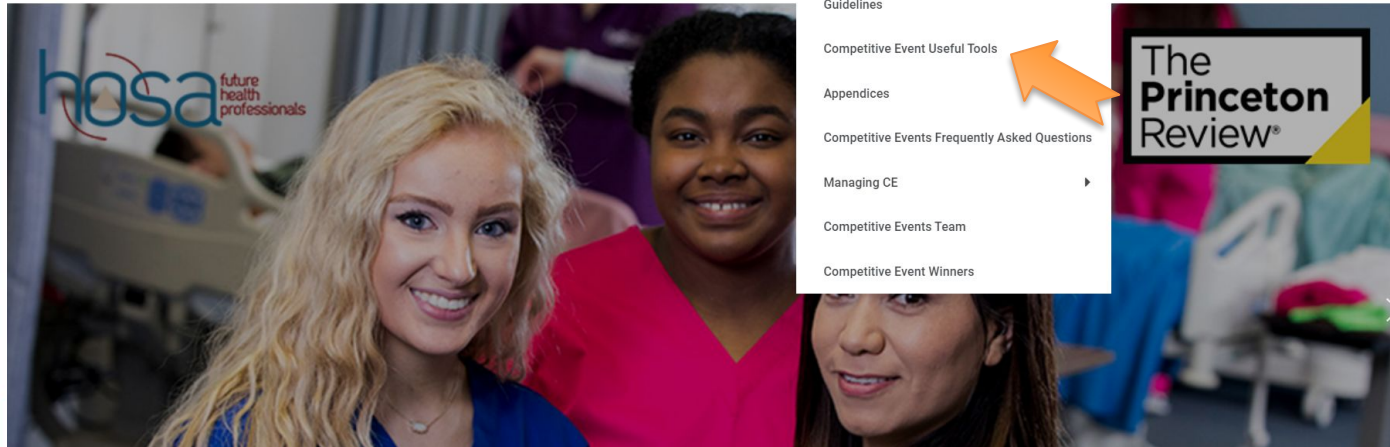
Appendices

Competitive Events Frequently Asked Questions

Managing CE ▶

Competitive Events Team

Competitive Event Winners



STEP 2 >

Selecting an Event



SEARCH HOSA



About ▾

MyHOSA ▾

Partners ▾

Competition ▾

Conferences ▾

Resources ▾

COMPETITION USEFUL TOOLS

Be sure to also read the General Rules and Regulations and CE Appendices for important information related to CE.

▸ 2021 - 2022 CE Updates and Changes

▸ **What Competitive Event is Right for You?**

VIDEO: Summary to Explore HOSA Events

21-22: A flow chart that asks students questions to help them determine the best competitive event for them

[Middle School Version](#)

[Secondary and Postsecondary / Collegiate version](#)

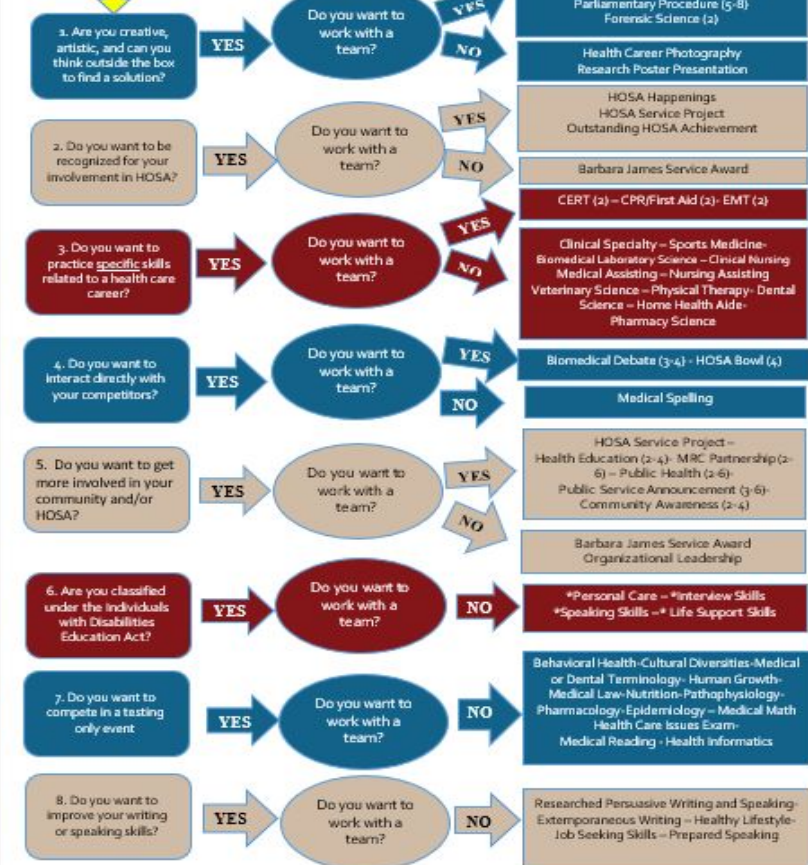


STEP 2 >

START HERE!

How to Choose a HOSA Competitive Event That's Right For You!

Secondary/Postsecondary
Division

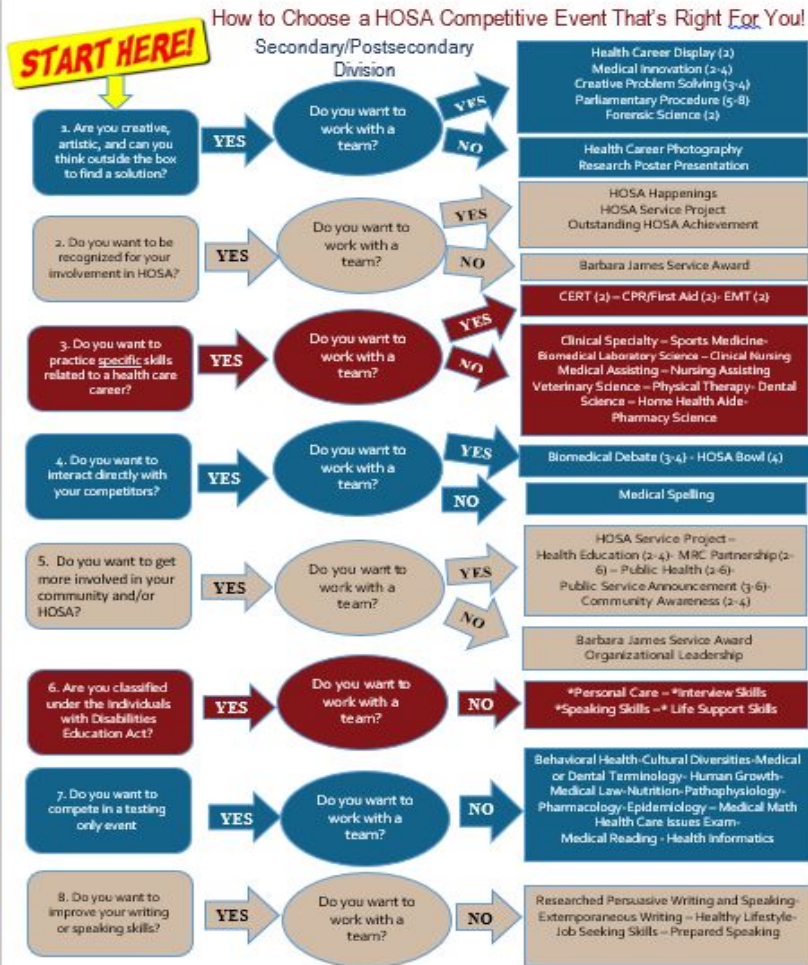


hosa

STEP 2 >



hosa



STEP 3 >

Guidelines



About ▾

MyHOSA ▾

Partners ▾

Competition ▾

Conferences ▾

Resources ▾

SEARCH HOSA



General Rules and Regulations

Guidelines

Competitive Events

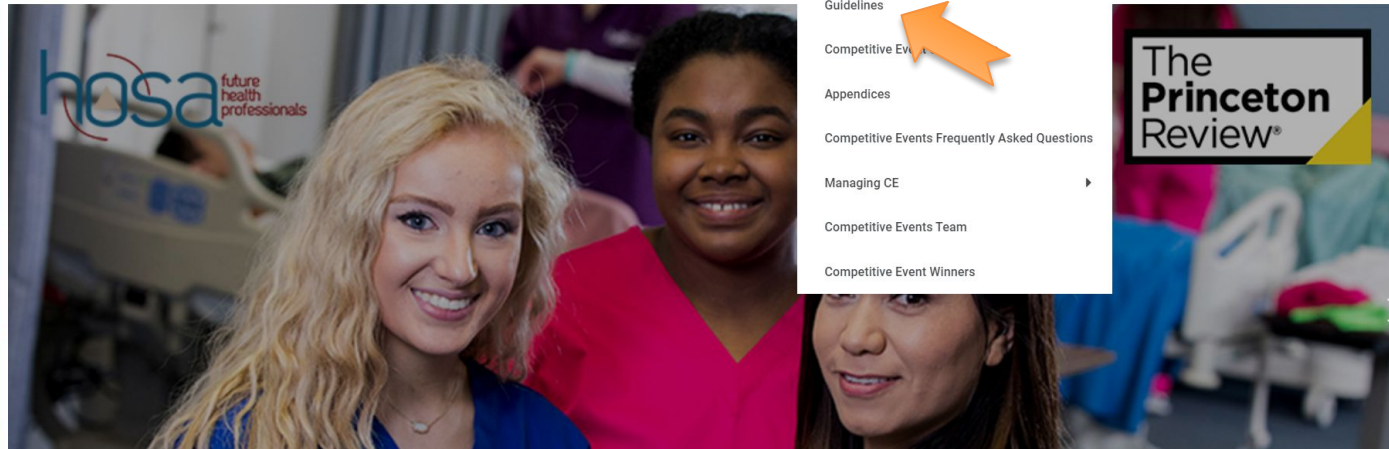
Appendices

Competitive Events Frequently Asked Questions

Managing CE ▶

Competitive Events Team

Competitive Event Winners



STEP 3 >

Guidelines

hosa future health professionals

LOGIN SHOP HOSA DONATE TRANSLATE

SEARCH HOSA

About MyHOSA Partners Competition Conferences Resources

Middle School Events

Middle School (MS)- A middle school student is one who: a) is enrolled in a state-approved health science program or is planning to pursue a career in the health professions; and b) has not been promoted to a secondary institution (grades 9-12) prior to the state's/country's annual conference. He/she must be in grades 6-8.

Barbara James Service Award Recognition	Dynamic Decisions Teamwork	Exploring Medical Innovation Teamwork	Extemporaneous Health Poster Leadership	Foundations of Medical Terminology Health Science
Health Career Exploration Health Science	Health Career Display-MS Teamwork	Health Career Preparation Leadership	Health Education Teamwork	Healthy Lifestyle Leadership
HOSA Happenings Recognition	HOSA Service Project Recognition	Life Threatening Situations Emergency	Math For Health Careers Health Science	Foundations of Medical Reading Health Science
Foundations of Nutrition Health Science	Prepared Speaking Leadership	Public Health Emergency	Speaking Skills* Leadership IDEA qualified event	

STEP 3 >

GUIDELINES

Please review every step in the event guidelines!

- ▲ They contain the rules, test plan, resources, rating sheets, etc...
- ▲ Follow them to success!
- ▲ <https://hosa.org/guidelines/>



Family Medicine Physician

Event Summary

The Family Medicine Physician competitive event provides HOSA members with the opportunity to gain knowledge about this career path through interviews, research, and a peer presentation. Competitors will conduct interviews to learn more about family medicine, and then will share their finding with their peers through a presentation. Competitors will present their peer presentation to a panel of judges, showcasing what they have learned. This event aims to inspire members to learn about the dynamic field of Family Medicine and ultimately help AAFP in their goal to ensure that no less than 25% of medical school seniors select family medicine as their specialty by the year 2030.

Sponsorship This competitive event is sponsored by the [American Academy of Family Physicians \(AAFP\)](#)

Dress Code Competitors shall wear official HOSA uniform or proper business attire. Bonus points will be awarded for [proper dress.](#)

General Rules

1. Competitors in this event must be active members of HOSA and in good standing.
2. Secondary and Postsecondary/Collegiate divisions are eligible to compete in this event.
3. Competitors must be familiar with and adhere to the "[General Rules and Regulations of the HOSA Competitive Events Program \(GRR\).](#)"
4. All competitors shall report to the site of the event at the time designated for each round of competition. At ILC, competitor's [photo ID](#) must be presented prior to ALL competition rounds.

Learning Objectives

5. Through interviews and research (explained more below in #7-8), competitors will be able to identify:
 - a. Demand and Occupational Outlook
 - *Items to consider:*
 - *Outline the need for Family Medicine Physicians and why now is the time to consider this career path.*
 - b. Span of Medical Education and Career Options
 - *Items to consider:*
 - *Outline the training requirements and options from Medical School to Family Medicine Residency, Dual Degrees, Fellowships, and Certificates of Added Qualification.*

STEP 3 >

RATING SHEETS

- ▲ This is what judges use to score event submissions, presentations, & competition activities
- ▲ Know them!

MRC PARTNERSHIP – Judge's Rating Sheet

Section # _____ Division: _____ SS _____ PS/Collegiate
 Competitor # _____ Judge's Signature _____

Portfolio Uploaded Online*: Yes _____ No _____
 *If the materials are not uploaded, please note that applicable items on the rubric below cannot be judged.

A. Portfolio	Excellent 5 points	Good 4 points	Average 3 points	Fair 2 points	Poor 0 points	JUDGE SCORE
1. Title Page	Title page contains ALL requirements: Event Name, Team Member Names, HOSA Division, HOSA Chapter #, School Name, State/Assoc	N/A	N/A	N/A	All requirements are not met.	
2. HOSA/MRC Partnership Verification Form	The Partnership Verification Form includes: 1. MRC Unit full address 2. MRC leader's signature at the beginning of the project 3. MRC leader's signature at the conclusion of the project	NA	NA	NA	The Partnership Verification form is missing or does not include all 3 required criteria	
3. Partnership Logistics Document	The Partnership Logistics Document includes: 1. Description of how the HOSA chapter and MRC unit will maintain communication 2. How frequently the HOSA chapter and MRC unit will be in contact 3. Who is responsible for maintaining and initiating contact 4. MRC leader's full mailing address	The Partnership Logistics Document includes answers to 3 of the 4 questions.	The Partnership Logistics Document includes answers to 2 of the 4 questions.	The Partnership Logistics Document includes answers to 1 of the 4 questions.	The Partnership Logistics Document is blank or not included	

STEP 3 >

Event Samples



About ▾

MyHOSA ▾

Partners ▾

Competition ▾

Conferences ▾

Resources ▾

SEARCH HOSA 

General Rules and Regulations

Guidelines

Competitive Event Useful Tools

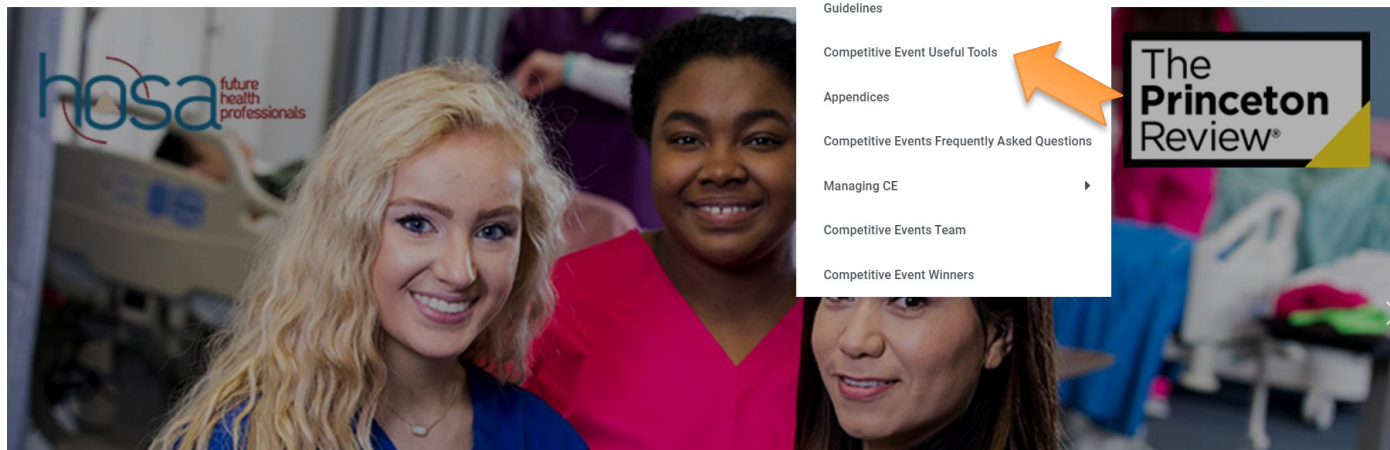
Appendices

Competitive Events Frequently Asked Questions

Managing CE ▶

Competitive Events Team

Competitive Event Winners



STEP 3 >

Event Samples



SEARCH HOSA



About ▾

MyHOSA ▾

Partners ▾

Competition ▾

Conferences ▾

Resources ▾

COMPETITION USEFUL TOOLS

▸ Event Preparation and Resources

▸ HATS Instructions

▸ CE & Tallo

▸ **Event Samples**

[Competitive Event Samples](#)

[Sample Forensic Science Case Study](#)

[Sample Parliamentary Procedure Problem](#)



<https://hosa.org/competitive-event-sample/>

STEP 3 >

We're Here to Help!

CLICK HERE TO REGISTER FOR AN EVENT!

hosa future health professionals
GEORGIA

About Conferences Competition Advisors Resources E-Magazine [Donate](#) [Store](#) Cart (0)

State Leadership Conference

MARCH 10-12, 2022

Brenau University *Follow your passion for helping others*

Georgia HOSA
Georgia HOSA is here for you! What can we help you with?
*WE ARE UNABLE TO ANSWER TEST/ SCAVENGER HUNT ?S VIA THE CHAT :)
Reply to Georgia HOSA
Chat by Drift

hosa